

D-SPOT™ Series

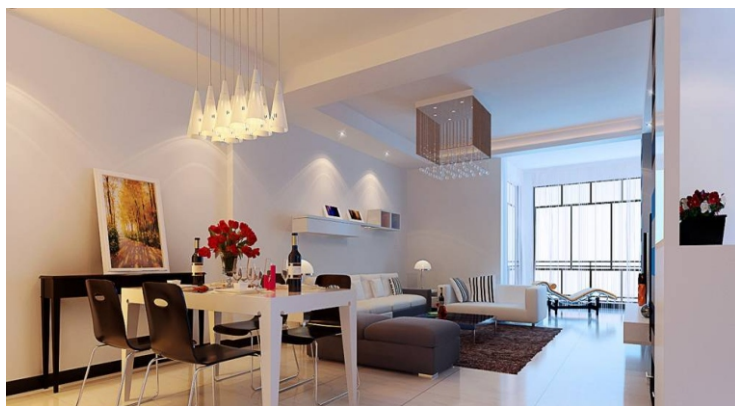
D-Spot™ is Special economic LED Spot lamp series, exceptionally high performance LED lamps , and low price. It is a premium quality solid state lighting product precisely engineered and manufactured with state of the art technologies and materials. Proprietary driving circuit enables D-Spot™ to replace traditional incandescent/halogen lamp, up to 40 watt, directly without additional modification or transformer .

Features

- Highly cost-effective.
- Can replace the conventional spot lights, soft light.
- Material: Aluminium (shell) + PC (Top)
- Available shell colors:
3W: silver
4W: black, silver;
- Lens type:
3W: Clear, Dot
4W: Clear, Dot
- High Brightness LED's.
- Efficient Heat Dissipation.
- Base: GU10/E27/MR16
- Low heat, No UV, No IR.
- Life Span: 50,000 hours
- Standard Warranty: 3 Years

Applications

Widely used in the hotel, meeting room, offices, hospital , schools, factories, commercial lighting, shopping malls, supermarkets, kitchen, display, backlight, home indoor lighting and so on.



3W



GU10

E27

MR16

4W



GU10

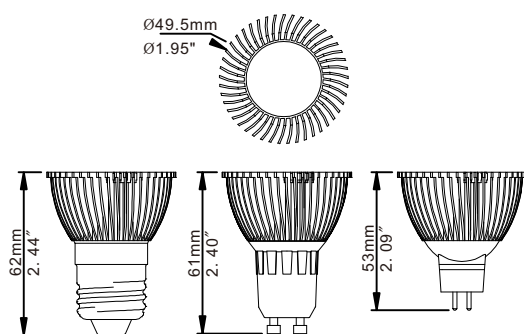
E27

MR16

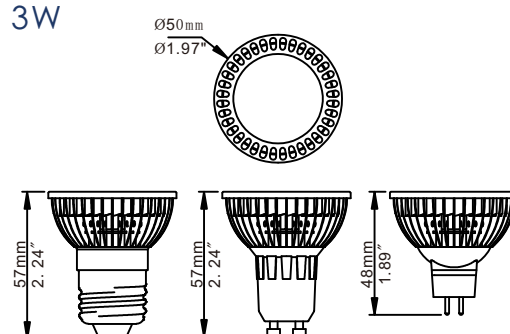


Dimensions (Unit: mm/inch)

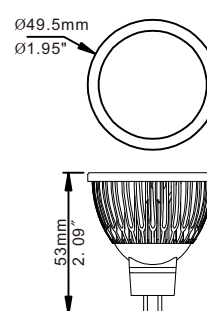
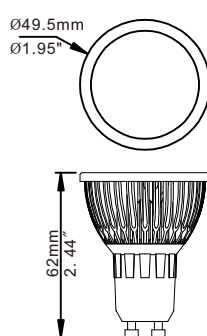
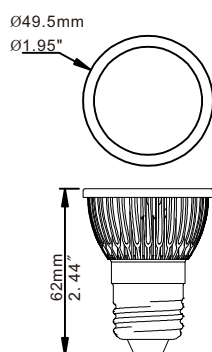
3W



3W



4W



Specifications

Model #	CCT	LED Type	Lumen (lm±10%)	CRI	Power	Voltage	Beam Angle	Weight			
E27-003-AW-W-01	5500-6000K	Edison	203	≥70	3W	100-240V AC 50/60Hz	30°	48g			
E27-003-AW-NW-01	4000-4500K		209	≥70							
E27-003-AW-WW-01	2800-3200K		186	≥70							
GU10-003-AW-W-01	5500-6000K		203	≥70							
GU10-003-AW-NW-01	4000-4500K		209	≥70							
GU10-003-AW-WW-01	2800-3200K		186	≥70							
GU5.3-003-AW-W-01	5500-6000K		209	≥70							
GU5.3-003-AW-NW-01	4000-4500K		203	≥70							
GU5.3-003-AW-WW-01	2800-3200K		186	≥70							
E27-004-AW-W-01	5500-6000K	Edison	265	≥70	4W						
E27-004-AW-NW-01	4000-4500K		272	≥70							
E27-004-AW-WW-01	2800-3200K		245	≥70							
GU10-004-AW-W-01	5500-6000K		265	≥70							
GU10-004-AW-NW-01	4000-4500K		272	≥70							
GU10-004-AW-WW-01	2800-3200K		245	≥70							
GU5.3-004-AW-W-01	5500-6000K		265	≥70							
GU5.3-004-AW-NW-01	4000-4500K		272	≥70							
GU5.3-004-AW-WW-01	2800-3200K		245	≥70							
MR16-003-D4-W-01	5500-6000K	Edison	203	≥70	3W	12-24V AC/DC					
MR16-003-D4-NW-01	4000-4500K		209	≥70							
MR16-003-D4-WW-01	2800-3200K		186	≥70							
MR16-004-D4-W-01	5500-6000K	Edison	265	≥70	4W						
MR16-004-D4-NW-01	4000-4500K		272	≥70							
MR16-004-D4-WW-01	2800-3200K		245	≥70							

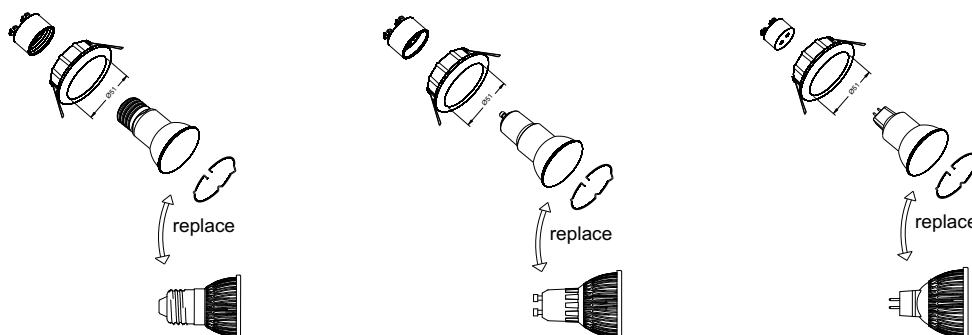
We offer wide range of D-Spot lamp to choose from, making it easy to creat profect light enviornment. prduct features are summerised below.

100-240V AC 50/60Hz	MR 16 12-24V AC/DC	E27	GU 10	MR 16	Lens type Clear	Lens type Dots	3W	4W	Shell Color Black	Shell Color Silver
---------------------------	--------------------------	-----	-------	-------	--------------------	-------------------	----	----	----------------------	-----------------------

Absolute Maximum Rating

Parameter	Rating	Units
Aluminum Heat sink Temperature	66	° C
Operating Temperature	-20~+40	° C
Storage Temperature	-20~+80	° C
Equilibrium Temperature	60	° C

Installation drawing



- ⚠ The product is strictly prohibited to be used in these conditions:
- For fixtures and circuits with dimming functions:(neither with 100% full brightness)
 - For fixtures with internal control circuits (not including those which are officially allowed)
 - For conventional direction lamp or exit lights
 - For mercury vapor lamps, sodium lamps or HID lamps
 - For airtight or mechanically sealed fixtures

- ⚠ CAUTIONS
- Don't install it around a humid environment or place which has water drops.
 - Don't drop, scratch or squeeze the bulb.
 - Don't take apart the product or replace mechanical and electronic components.
 - Care needs to be taken that the light fixture with the bulb is a safe distance from paper, fabric or other inflammables.
 - Tighten the bulb base into socket in case to prevent falling out.
 - Don't touch the bulb body with fingers after it works for some time as the body temperature is quite warm.
 - Do not stare at the strong light for a long time as it may cause injury to eyes.