



# MASTER LEDtube Mains T5



## MAS LEDtube 600mm HE 7W 840 T5 EU

The new Philips Master LEDtube Mains T5 brings simplicity to your lighting project. You don't need to pay attention to the driver technology anymore. Thanks to a unique design, Philips MASTER LEDtube Mains T5 installs in luminaires operating on mains power connection. So simple to operate! . Perfectly safe, reliable & easy to install Philips MASTER LEDtube Mains T5 is the ideal alternative to standard fluorescent tubes to maximize value over lifetime with high energy saving and lower maintenance costs.

### Product data

General Information	
Cap-Base	G5
Nominal lifetime	50,000 hour(s)
Switching Cycle	200,000
Lighting Technology	LED
Flux measurement reference	Sphere
Light Technical	
Color Code	840 [CCT of 4000K]
Beam Angle (Nom)	200 degree(s)
Luminous Flux	1,050 lm
Color Designation	Cool White (CW)
Correlated Color Temperature (Nom)	4000 K
Luminous Efficacy (rated) (Nom)	150 lm/W
Color Consistency	<6
Color rendering index (CRI)	80
LLMF At End Of Nominal Lifetime (Nom)	70 %

Photobiological safety according to EN 62471	RG0
Operating and Electrical	
Input Frequency	50 to 60 Hz
Power Consumption	7 W
Lamp Current (Nom)	32 mA
Starting Time (Nom)	0.5 s
Warm-up time to 60% light	0.5 s
Power Factor (Fraction)	0.9
Voltage (Nom)	220-240 V
LED alternative to fluorescent lamp power	14 W
Inrush current at mains	4.5
Max. lamp no. on MCB B type 10A - Mains	160
Max. lamp no. on MCB B type 10A – EM ballast without Compensation Capacitor.	-
Max. lamp no. on MCB B type 10A – EM ballast with Compensation Capacitor.	-
Max. lamp no. on MCB B type 16A - Mains	254

MASTER LEDtube Mains T5

Max. lamp no. on MCB B type 16A – EM ballast without Compensation Capacitor.	-
Max. lamp no. on MCB B type 16A – EM ballast with Compensation Capacitor.	-
Ballast Compatibility	Mains
Temperature	
T-Case Maximum (Nom)	50 °C
Controls and Dimming	
Dimmable	No
Mechanical and Housing	
Bulb Finish	Frosted
Bulb Material	Glass
Product Length	600 mm
Bulb Shape	T5
Net Weight (Piece)	0.070 kg
Approval and Application	
Energy Efficiency Class	D
Energy Saving Product	Yes
Approval Marks	RoHS compliance KEMA Keur certificate
Energy Consumption kWh/1000 h	7 kWh

EPREL Registration Number	1840374
CE mark	Yes
EU RoHS compliant	Yes
Flickering value (PstLM) - Flickering value as per EN 61000-3-3	1
Stroboscopic effect visibility measure (SVM)	0.4
Ambient temperature range	-20 to +45 °C

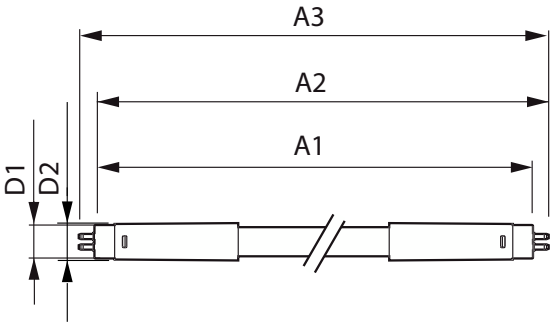
Application Conditions

can it be used in closed luminaires	Yes
-------------------------------------	-----

Product Data

Order product name	MAS LEDtube 600mm HE 7W 840 T5 EU
Full product name	MAS LEDtube 600mm HE 7W 840 T5 EU
Full product code	872016930682000
Order code	929003795502
Material Nr. (12NC)	929003795502
Numerator - Quantity Per Pack	1
EAN/UPC - Product/Case	8720169306820
Numerator - Packs per outer box	10
EAN/UPC - Case	8720169306837

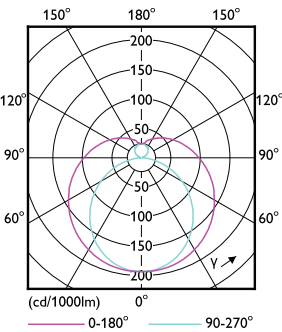
Dimensional drawing



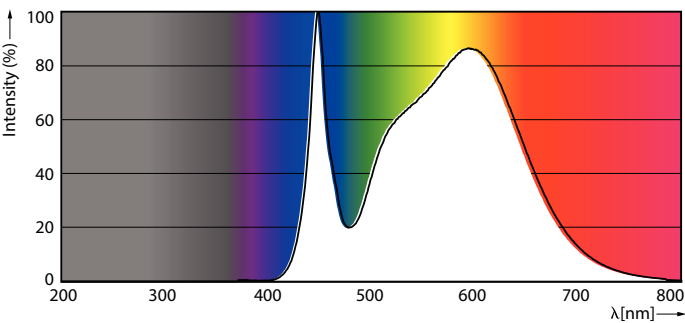
Product	D1	D2	A1	A2	A3
MAS LEDtube 600mm HE 7W 840 T5 EU	15.7 mm	19 mm	549 mm	556.1 mm	563.2 mm

MASTER LEDtube Mains T5

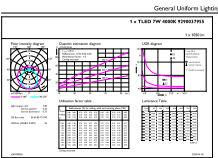
Photometric data



Light Distribution Diagram - MAS LEDtube 600mm HE 7W 840 T5 EU

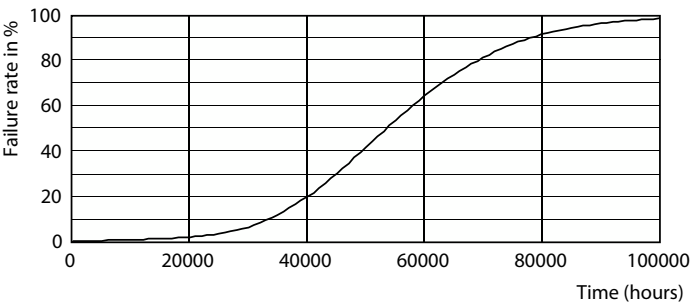


Spectral Power Distribution Colour - MAS LEDtube 600mm HE 7W 840 T5 EU

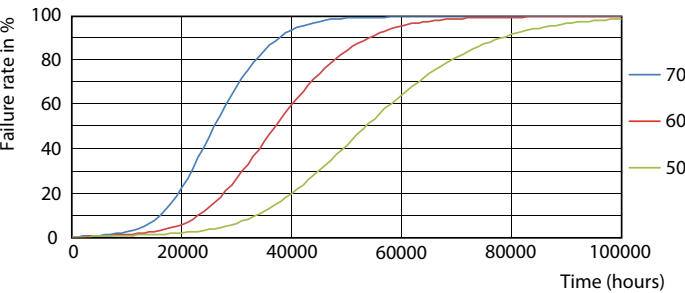


General uniform lighting - MAS LEDtube 600mm HE 7W 840 T5 EU

Lifetime



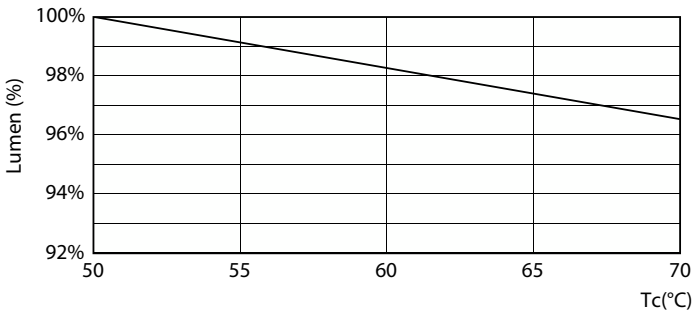
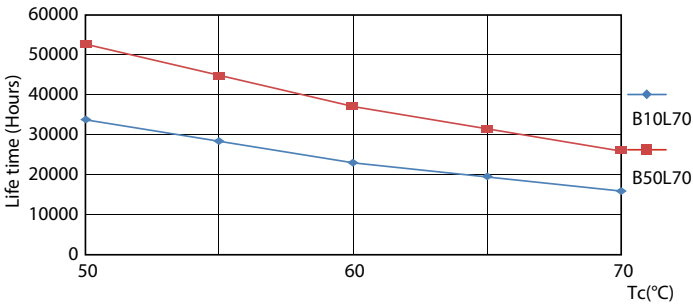
Life Expectancy Diagram



FailureRate

MASTER LEDtube Mains T5

Lifetime



LifetimeVsTc

Lumen Maintenance Diagram - MAS LEDtube 600mm HE 7W 840 T5 EU



Lumen Maintenance Diagram - MAS LEDtube 600mm HE 7W 840 T5 EU

